



**Torex<sup>®</sup>Gold**

**RESOURCES INC.**

TSX: TXG

October 6, 2015

*El Limon-Guajes Mine  
Photographic Report*

# General View: Mining And The Processing Plant

---



# Guajes Crusher & Stacker, RopeCon On The Right

---



# RopeCon: Frames Holding Cables and Men Going To Work



# RopeCon: Austrian Engineering



# Red Roofs – Truck Shop & Warehouse On The Left, Filter Building In The Center, Mill Building On The Right, Admin Building In The foreground



# Leach Tanks Are On The Critical Path, The 'Back Six' Are Needed For Start-Up And Are Assembled To Full Height



# No Process Water Escapes To The Environment, Installing An Impervious Liner To Prevent Leakage





# El Limon Crusher, The Top Floor Of The Crusher Building Is Poured, RopeCon Belt Turning Device Is Installed



# RopeCon Discharge At The Fine Ore Stockpile, The Tail Pulley and Belt Turning Device Are Supported On The RopeCon Cables



# Commissioning The Pre-Leach Thickener With Water



# SAG Mill, Final Adjustments Before Commissioning With Ore



# Ball Mill, Preparing For The First Test Run Of The Electric Motors



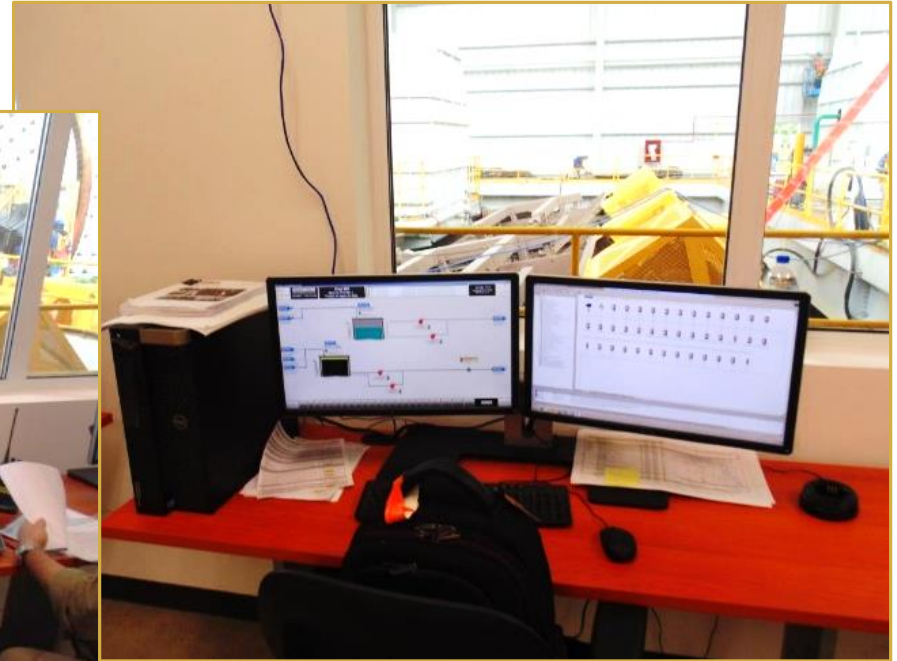
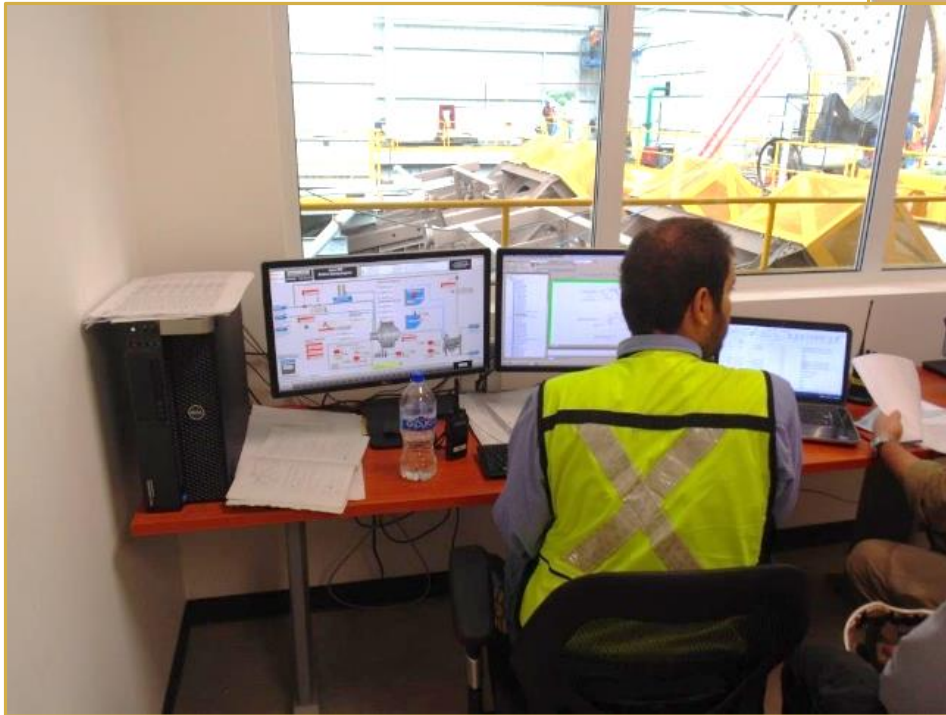
# SAG Mill & Discharge Screens (Foreground)



# Mill Control Room: (SAG Mill Through The Window)



# Mill Control Room, Testing The Process Control Software





# Pebble Crusher Building, Overflow From The SAG Mill Discharge Screens Is Crushed Here And Then Returned To The SAG Mill



# Processing Goes Counter Clockwise With The Dore Refinery At The Center Back



# The Inside Of A Leach Tank – Baffles And Air Diffuser Are Installed, Still Need To Bolt The Blades On The Agitator Shaft



# Under The Pre-Leach Thickener, Lots Of Pumps, Valves, And Piping



# CIP/CIC Area, The Building Is Much Higher Than The Tanks To Allow Clearance To Lift The Agitators Out Of The Tanks



# Carbon Handling, Getting Ready To Prepare The First Batch Of Carbon



# Refinery



# Filter Building, Conveyor To The Tailings Disposal Area Is On The Bottom Left





# Filters, Mechanical Connections Are Effectively Complete



# Filters, The Overhead Crane Has Been Commissioned And Is Used To Install The Filter Plates



# Cyanide Destruction, Commissioning With Water



# Reagent Building



# Admin Building



# First Aid Clinic

---



# Warehouse



# Truckshop





# New El Limon Village (The Second Village To Be Resettled)





**For further information:  
Gabriela Sanchez, VP Investor Relations  
email: [gabriela.sanchez@torexgold.com](mailto:gabriela.sanchez@torexgold.com)  
Mobile: (416) 357-6673  
[www.torexgold.com](http://www.torexgold.com)**