



Torex[®] Gold

RESOURCES INC.

TSX: TXG

September 2015

Photographic Report El Limon-Guajes

General View Of The Project Site – Looking North



General View Of The Project Site – Looking South



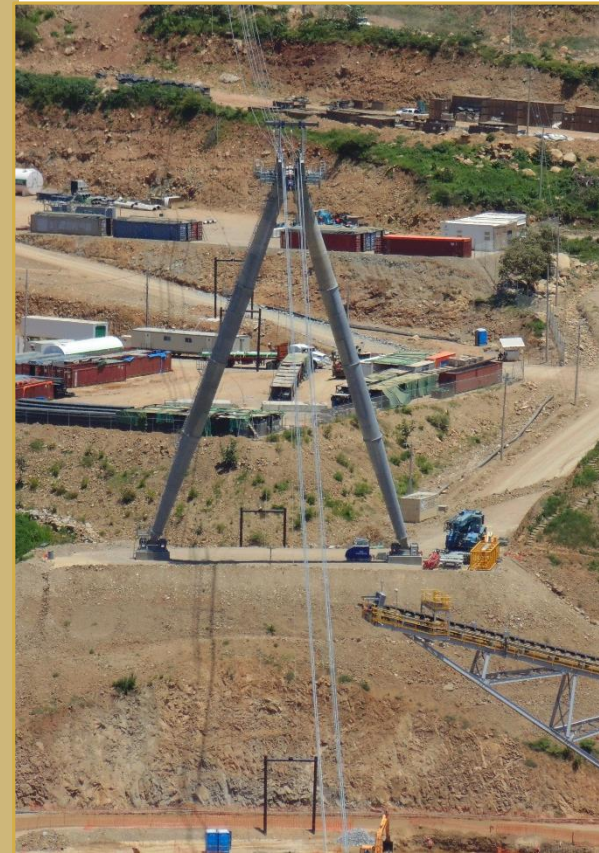
Guajes Crusher (L), RopeCon Tower With 'Ropes' (R)



El Limon Crusher With RopeCon 'Ropes'



RopeCon – All Six 'Ropes' Are Installed And Tensioned



El Limon – Transition Conveyor, Crusher To RopeCon



General View Of The Processing Plant



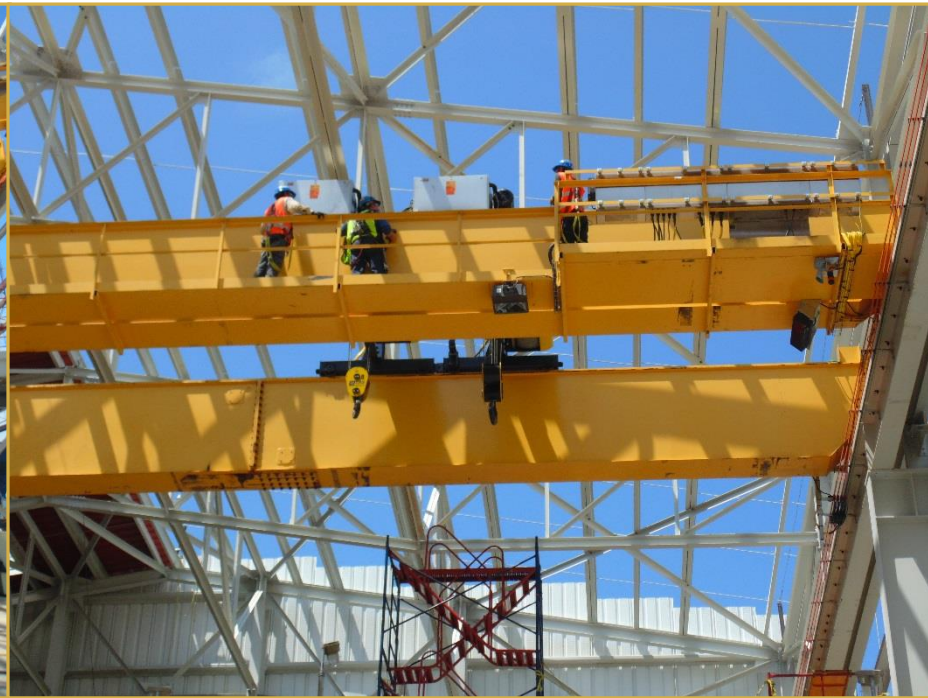
Mill Building From The North – Closing It In



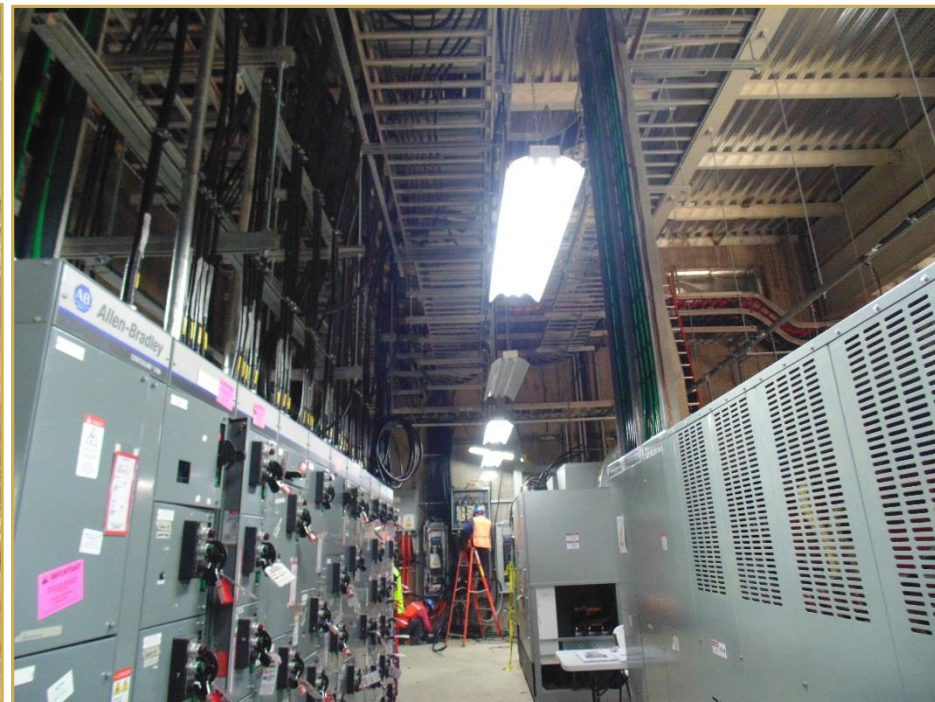
Mill Building (South) – Ready To Start Commissioning



Mill Building – Commissioning The Crane



Mill Building – Connecting Switch Gear To Equipment



Pebble Crushing Circuit



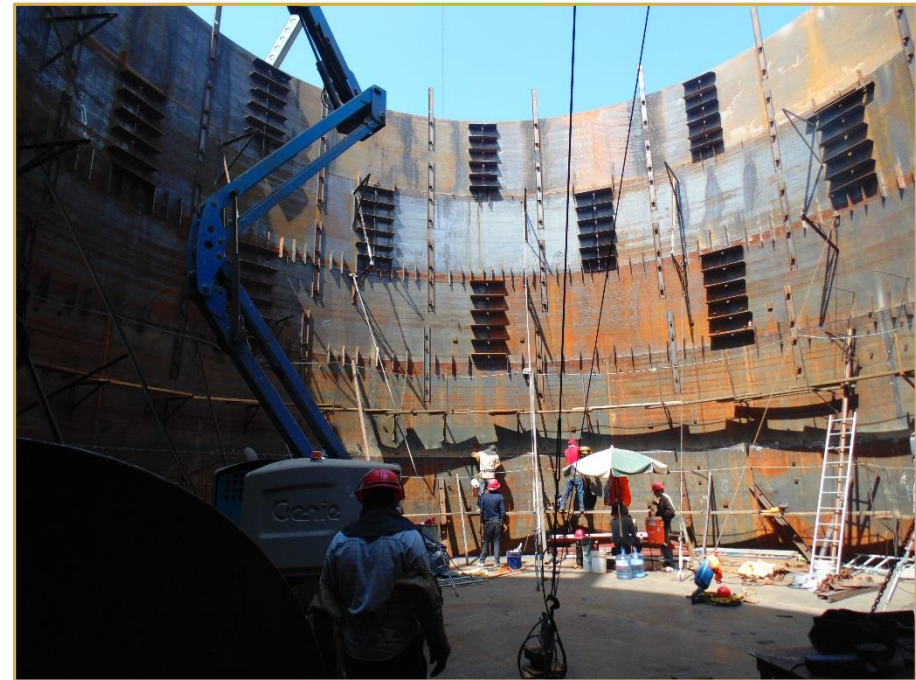
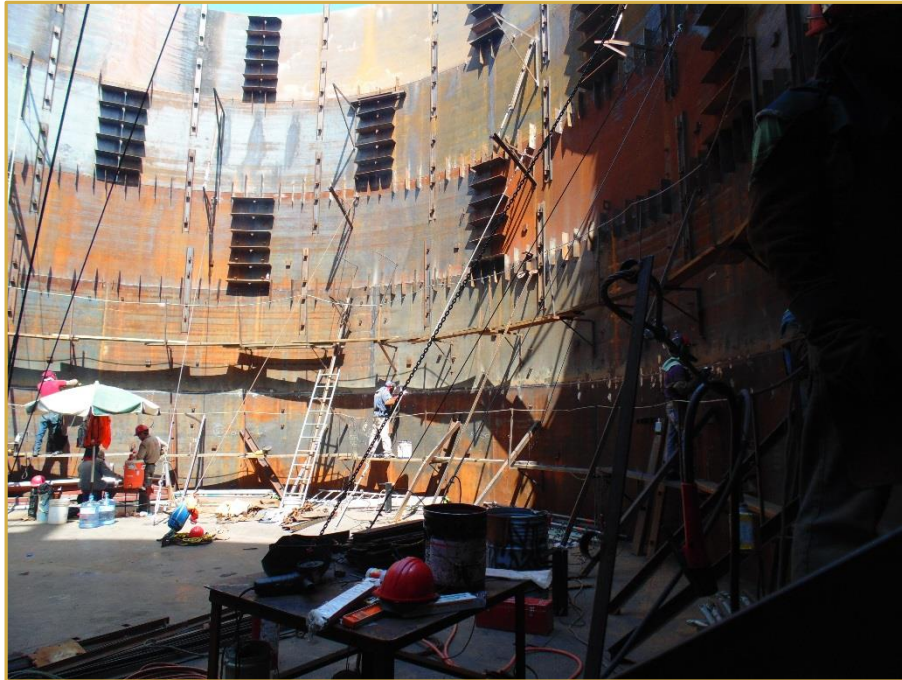
Leach Tanks – Will Start With The Back Row



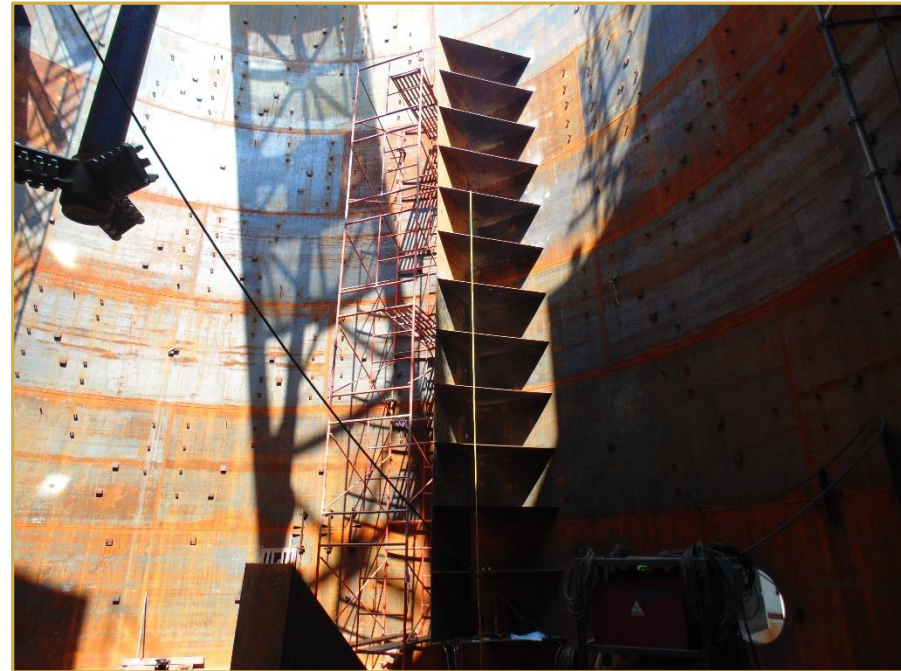
Leach Tanks – Welding The Segments Together



Leach Tanks – Welding From The Inside As Well



Leach Tanks – Installing Agitators And Baffles



Leaching – Installing Cable Trays And Electrical Cables



From Leaching To CIP/CIC – General View



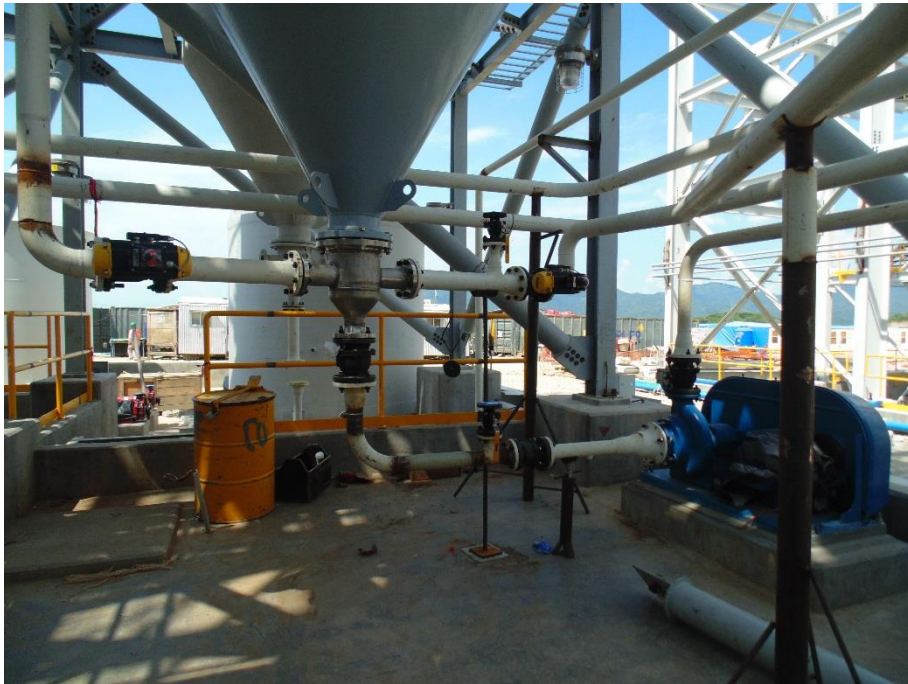
Carbon Handling



Carbon Handling – Pipe Installation



Carbon Handling – Valve And Pump Installation



Refinery – General View



Refinery – Building The Roof



Filter Building - General View (Crane Is Commissioned)



Filter Building- Connecting Equipment With Pipes



Cyanide Destruction



Dry Stack Tailings



Dry Stack Tailings – Conveying To The Disposal Area



Fresh/Fire Water System (Preparation For Painting)



Reagent Building



Administration Building



First-Aid Clinic



Warehouse



Truckshop



Central Water Pond – Ready For Liner Installation



Moving Into The First New Village - La Fundicion



La Fundicion - Turning Their New House Into A Home



Constructing The Second New Village - El Limon





For further information:
Gabriela Sanchez, VP Investor Relations
email: gabriela.sanchez@torexgold.com
Mobile: (416) 357-6673
www.torexgold.com